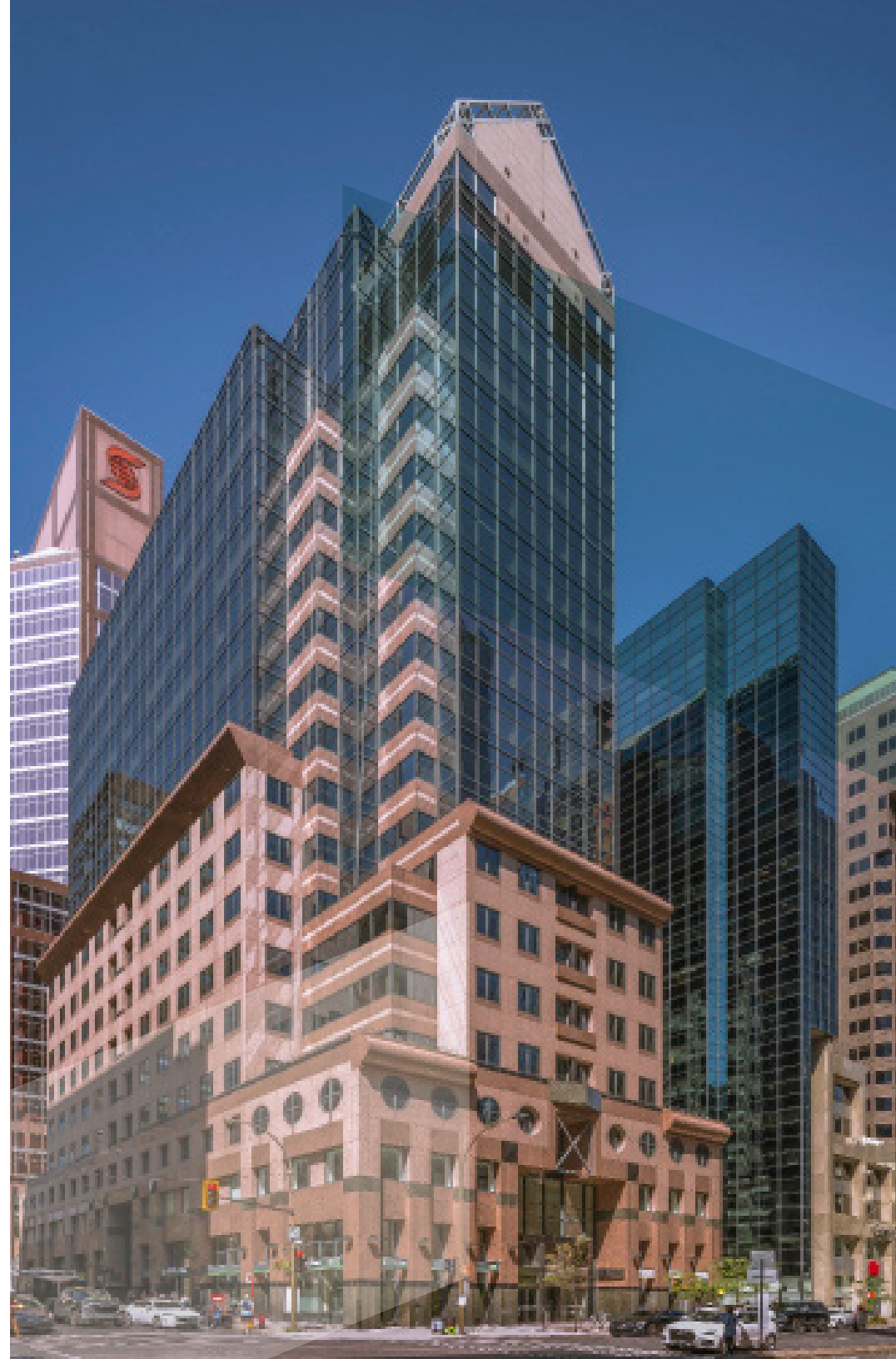




999 DE MAISONNEUVE



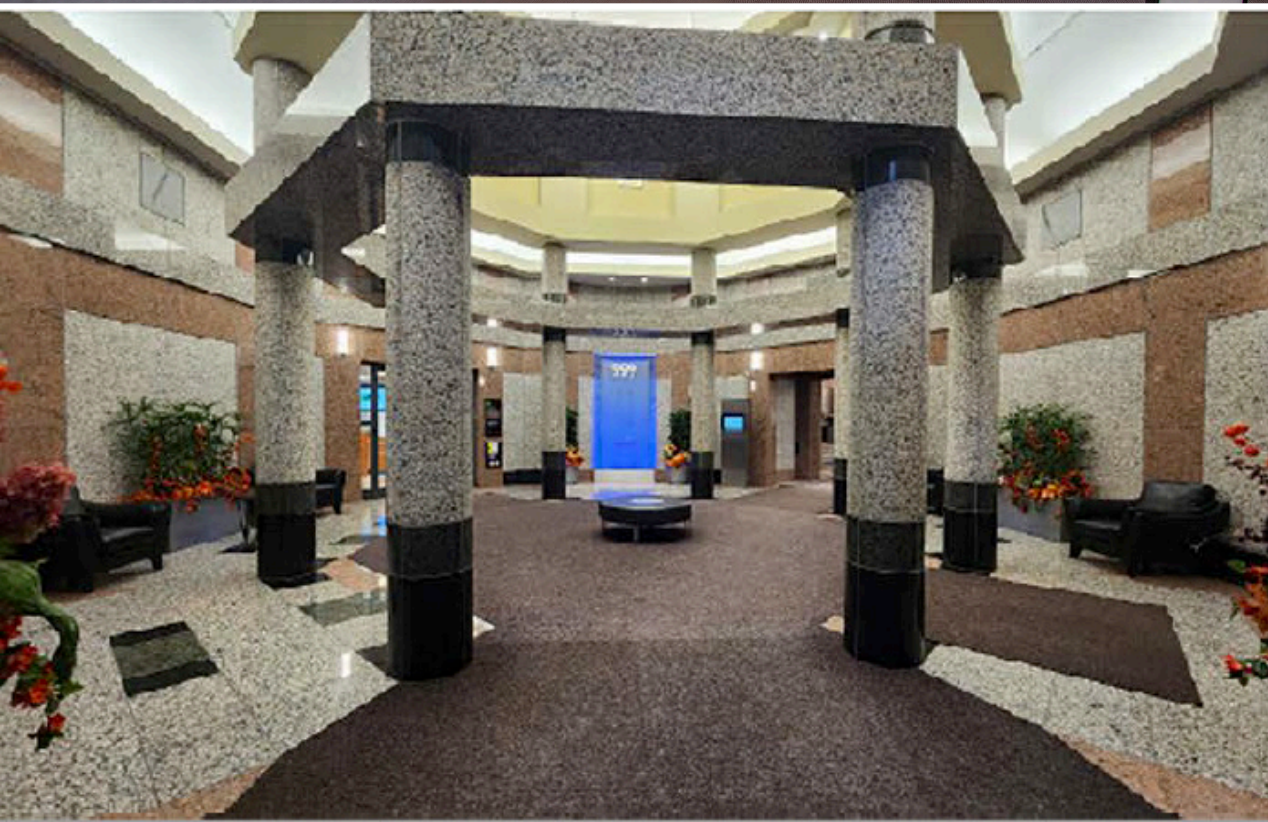
999 DE MAISONNEUVE

- 18 floors
- Built in 1990
- Building area: 230,942 Sq.Ft.
- BOMA BEST Silver
- Security 24/7
- Underground parking
- Secure bicycle parking
- Conference Centre
- Private gym
- Near Peel and McGill metro stations as well as the downtown REM station
- Connected to the underground network
- Near Dorchester Square
- 900 metres from Mont-Royal walking path access
- In proximity to multiple services, restaurants and boutiques





BGO
Properties

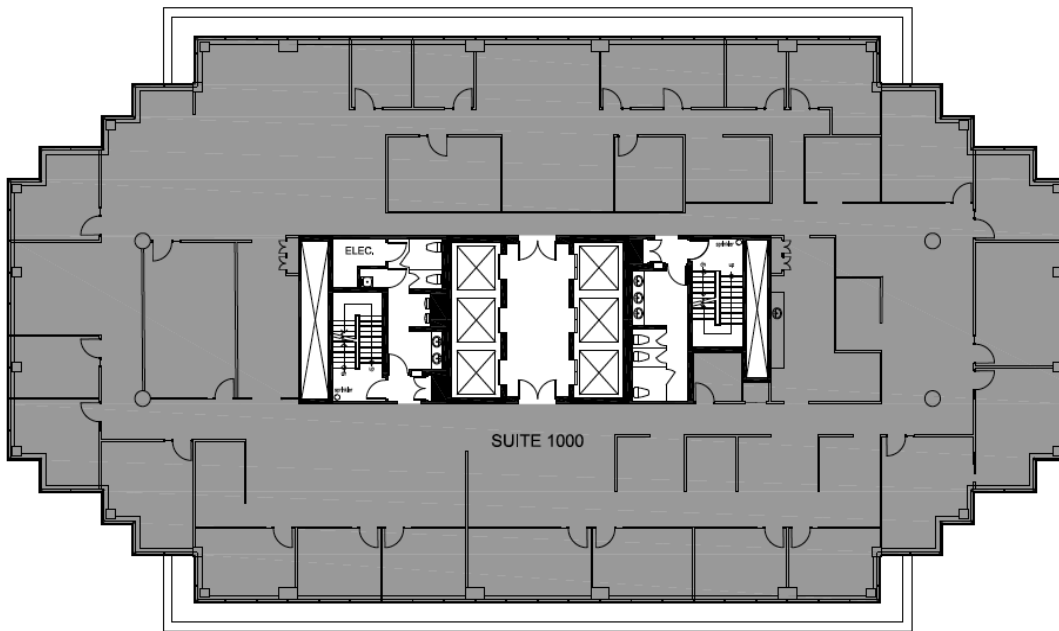
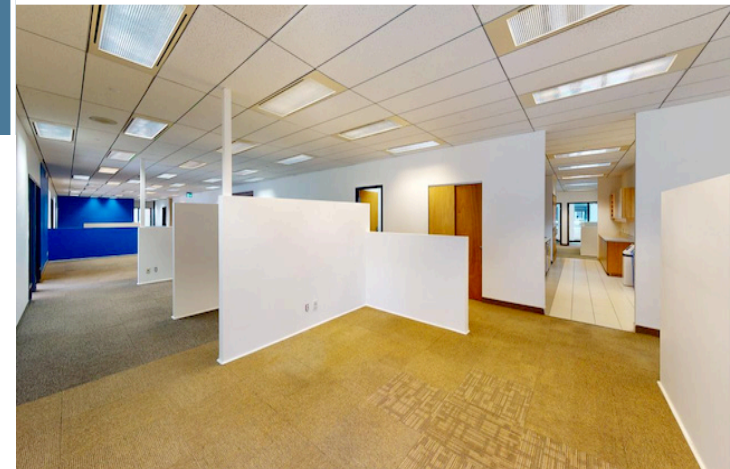
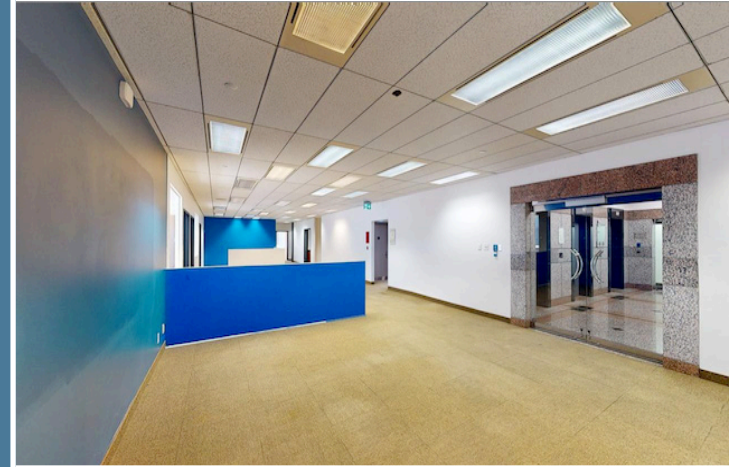


SUITE

1 000

13,011
SQ.FT.

Explore a dynamic environment where private offices and meeting rooms seamlessly blend to cater to your requirements. Seize the opportunity to customize your perfect workspace!



ADDITIONAL RENT 2025

Total	\$29.89
Realty tax	\$10.34
Utilities	\$1.31
Operating expenses	\$18.24

PARKING

Not reserved \$280/month+tx

DOMINIQUE SAUCIER

Vice-President, Leasing

+ 1 514 686-9497

dominique.saucier@bgo.com

[View Online](#)

[Virtual Tour](#)